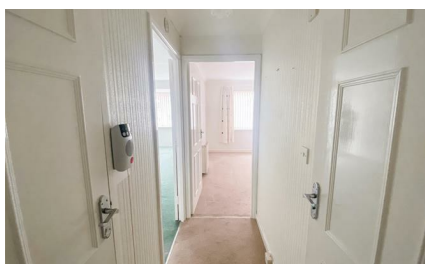




Flat 19 Cavendish Court High Street, Herne Bay, Kent, CT6 5LB



Vacant First Floor house managed 1 bedroom leasehold flat. Electric central heating. Central location in High Street and close to sea front. Bay window with some sea glimpses91 YEARS UNEXPIRED LEASE £150 PER ANNUM GROUND RENTAPPROX ANNUAL SERVICE CHARGE £2408 Communal rear garden



£100,000 Leasehold



Entrance Hall

Large storage cupboard with shelving and housing electric meters.

Shower Room

Shower cubicle with 'Mira' electric shower unit. Fully tiled. Low level WC. Pedestal wash hand basin. Extractor fan. Emergency pull cord.

Bedroom 1

12'2 x 8'10 (3.71m x 2.69m)

Window to front. Storage heater. Television point. Power points. Built in wardrobe.

Lounge

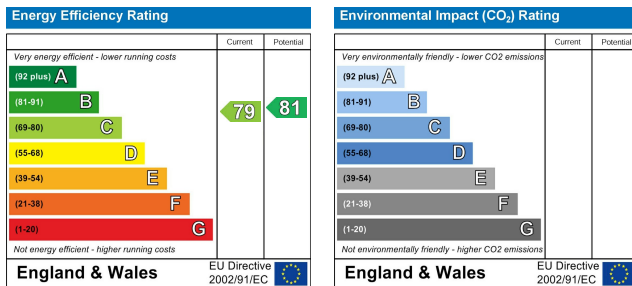
19'2 (into bay) x 10'6 (5.84m (into bay) x 3.20m)

Bay window to front. Storage heater. Television point. Power points.

Kitchen

7'5 x 5'3 (2.13m x 1.60m)

Range of wall and base units with matching work surfaces. Electric cooker. Extractor hood. Recess for fridge. Stainless steel sink unit and drainer with mixer tap.



Note:

We have not tested the heating system, electrical appliances or the electric, gas and plumbing systems.

If travelling any distance to view this property it is advisable to check the availability and viewing times before hand. Wilbee & Son, as agents, cannot be held responsible for lost journey times and / or any expenses incurred.

These particulars are issued on the condition that any negotiations respecting the property are through Wilbee & Son. Every care is taken in giving particulars but should any error inadvertently occur or any property found to be previously withdrawn or disposed of, Wilbee & Son do not hold themselves responsible for any expenses or loss of time incurred. Neither the Vendor, nor the Partners or any employee of Wilbee & Son make or give any representation or warranty in relation to the property.

Oyster Financial Services is an appointed representative of Openwork Limited, which is authorised and regulated by the Financial Services Authority





WILBEE & SON



01227 374010

property@wilbeeandson.co.uk